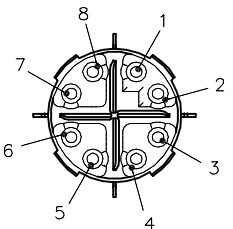
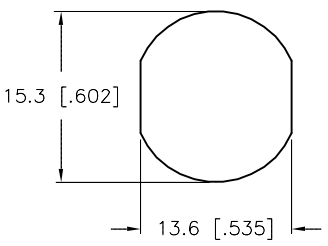


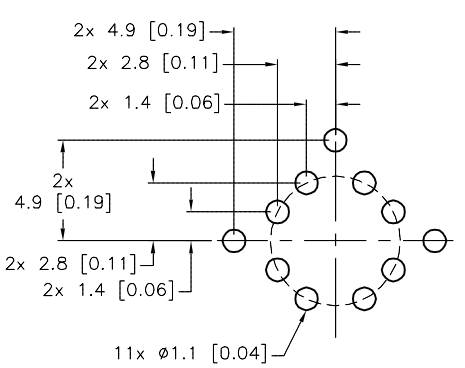
FEMALE END VIEW



TYPICAL PANEL CUTOUT

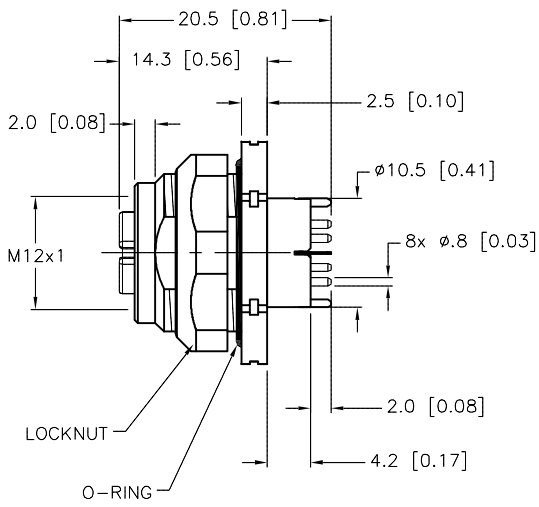
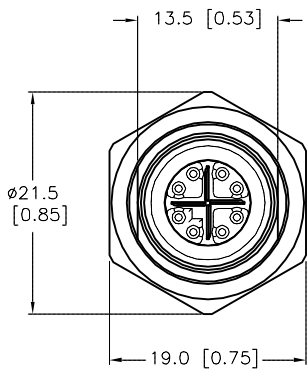


TYPICAL BOARD LAYOUT



SPECIFICATIONS

CONTACT CARRIER MATERIAL	PA
CONTACT MATERIAL/PLATING	BRASS/GOLD
HOUSING MATERIAL/COLOR	BRASS/NICKEL
O-RING MATERIAL	BUNA-N
RATED CURRENT [A]	0.5 A
RATED VOLTAGE [V]	48V
NUMBERS OF CONDUCTORS [AWG]	8 PRINTED CIRCUIT PINS
TEMPERATURE RATING	-40°C to +80°C (-40°F to +176°F)
PROTECTION CLASS	MEETS IEC IP67



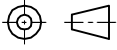
NOTES:
1. TURCK EQUIVALENT: FKFDKX 86-PCB

SOURCE DRAWING - FOR REFERENCE ONLY

RELATED DOCUMENTS

1.
2.
3.
4.

3RD ANGLE PROJECTION



THIS DRAWING IS CONFIDENTIAL AND THE PROPERTY OF TURCK INC. USE OF THIS DOCUMENT WITHOUT WRITTEN PERMISSION IS PROHIBITED.

DRFT RDS

APVD A.A.

DATE 08/24/12

SCALE 1=.8

UNIT OF MEASUREMENT

MILLIMETER [INCH]

DO NOT SCALE THIS DRAWING

3000 CAMPUS DRIVE
MINNEAPOLIS, MN 55441
1-800-544-7769
(763) 553-7300
(763) 553-0708 fax
www.turck.us

TURCK

DESCRIPTION

FKFDKX 86-PCB

IDENTIFICATION NO.

U2-20078

REV

D

D UPDATE TEMPERATURE SPECS

REV DESCRIPTION

RDS 06/14/18

BY DATE

65785

ECO NO.

SEE SPECIFICATIONS

SEE SPECIFICATIONS

CONTACT TURCK FOR MORE INFORMATION